

The background is a light blue gradient with several realistic water droplets of various sizes scattered across it. The droplets have highlights and shadows, giving them a three-dimensional appearance.

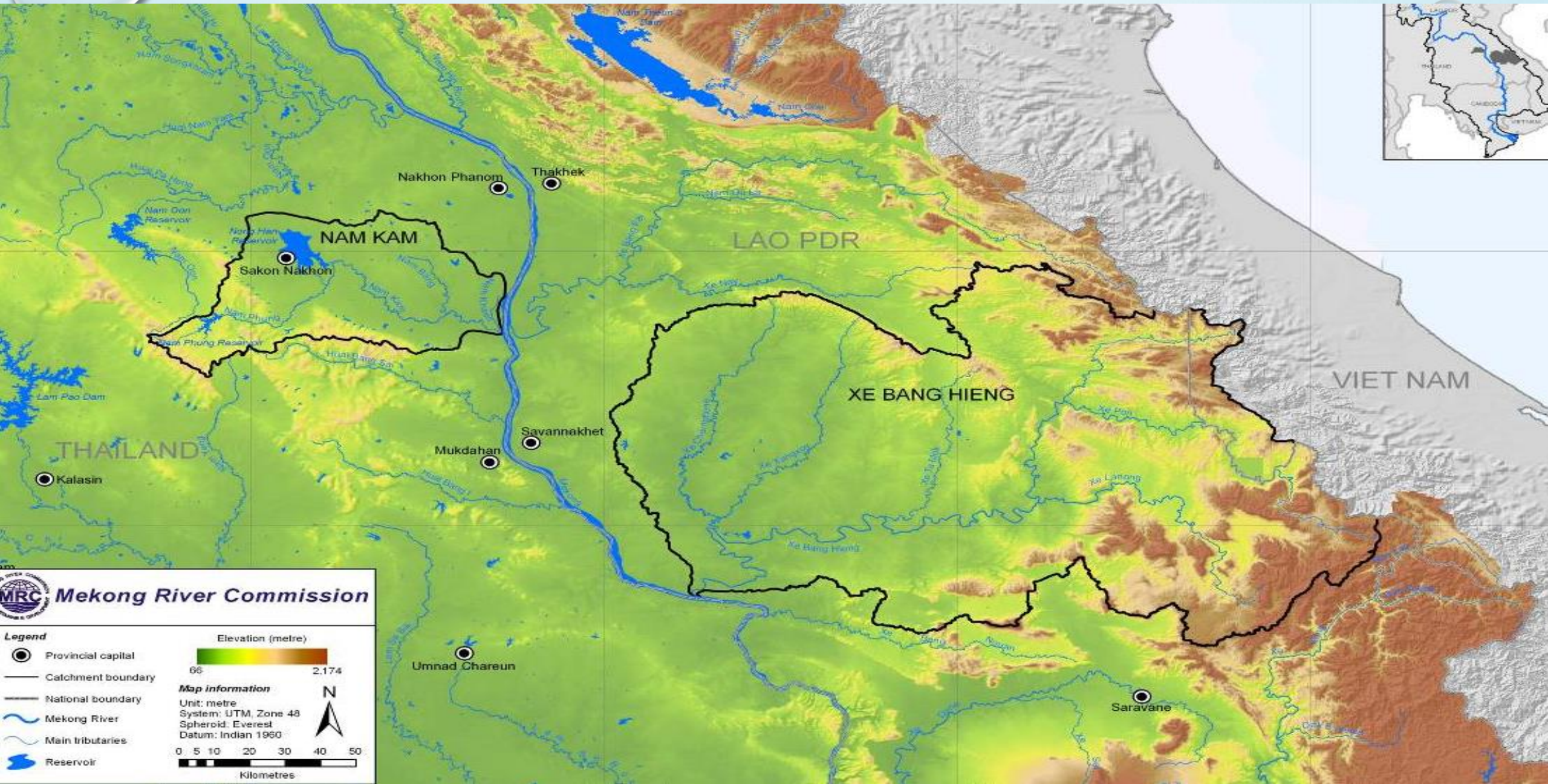
NAM KAM – XE BANG HIENG WETLAND MANAGEMENT PROJECT

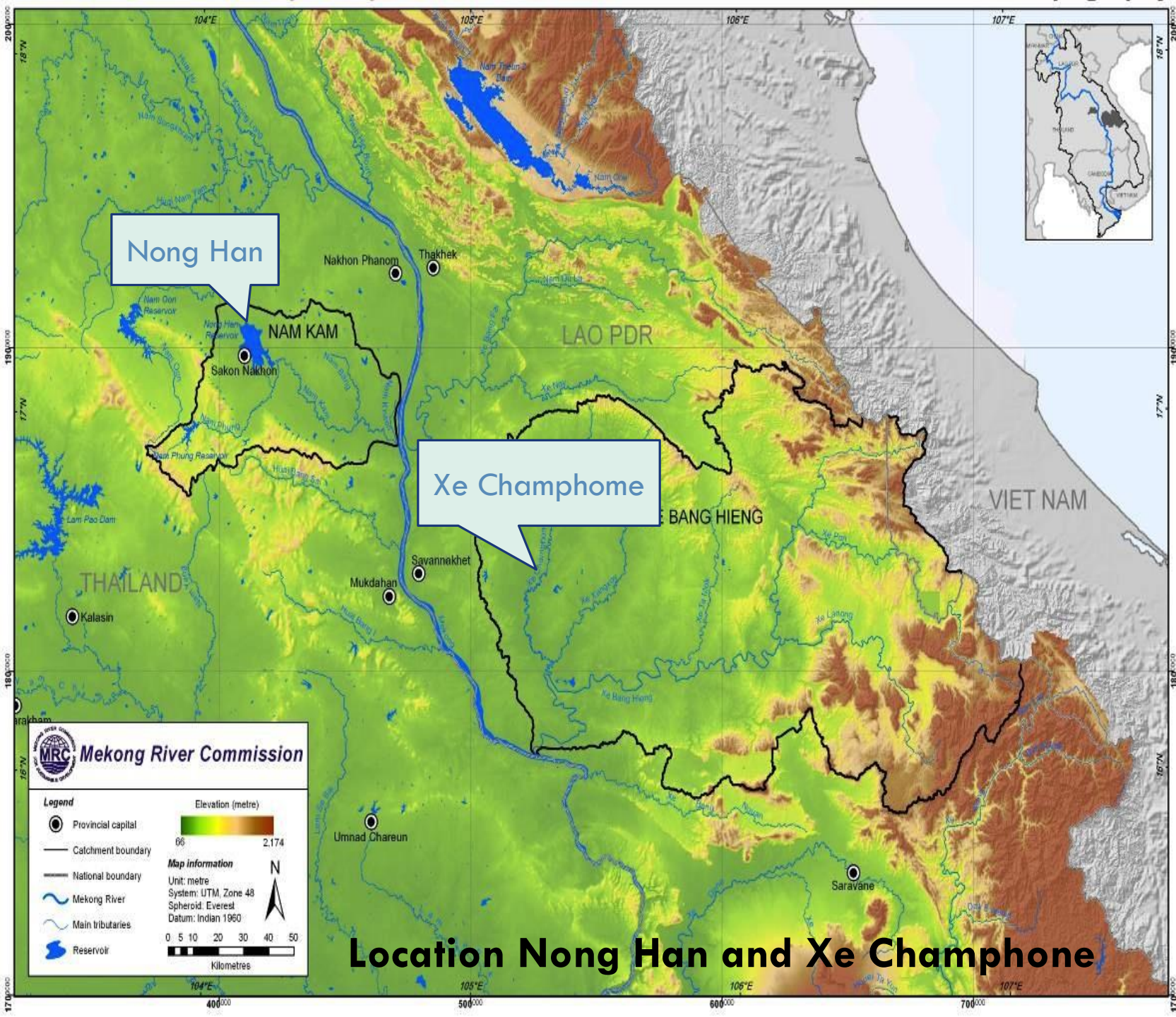
THE 7TH MRC REGIONAL STAKEHOLDER FORUM- MEKONG
TRANSBOUNDARY INTEGRATED WATER RESOURCES MANAGEMENT
FORUM

20 MAY 2019

BANGKOK, THAILAND

Project Area





Nong Han

Xe Champhone

MRC Mekong River Commission

Legend

- Provincial capital
- Catchment boundary
- National boundary
- Mekong River
- Main tributaries
- Reservoir

Elevation (metre)

66 2,174

Map information

Unit: metre
 System: UTM, Zone 48
 Spheroid: Everest
 Datum: Indian 1960

0 5 10 20 30 40 50
 Kilometres

Location Nong Han and Xe Champhone

OVERALL GOAL

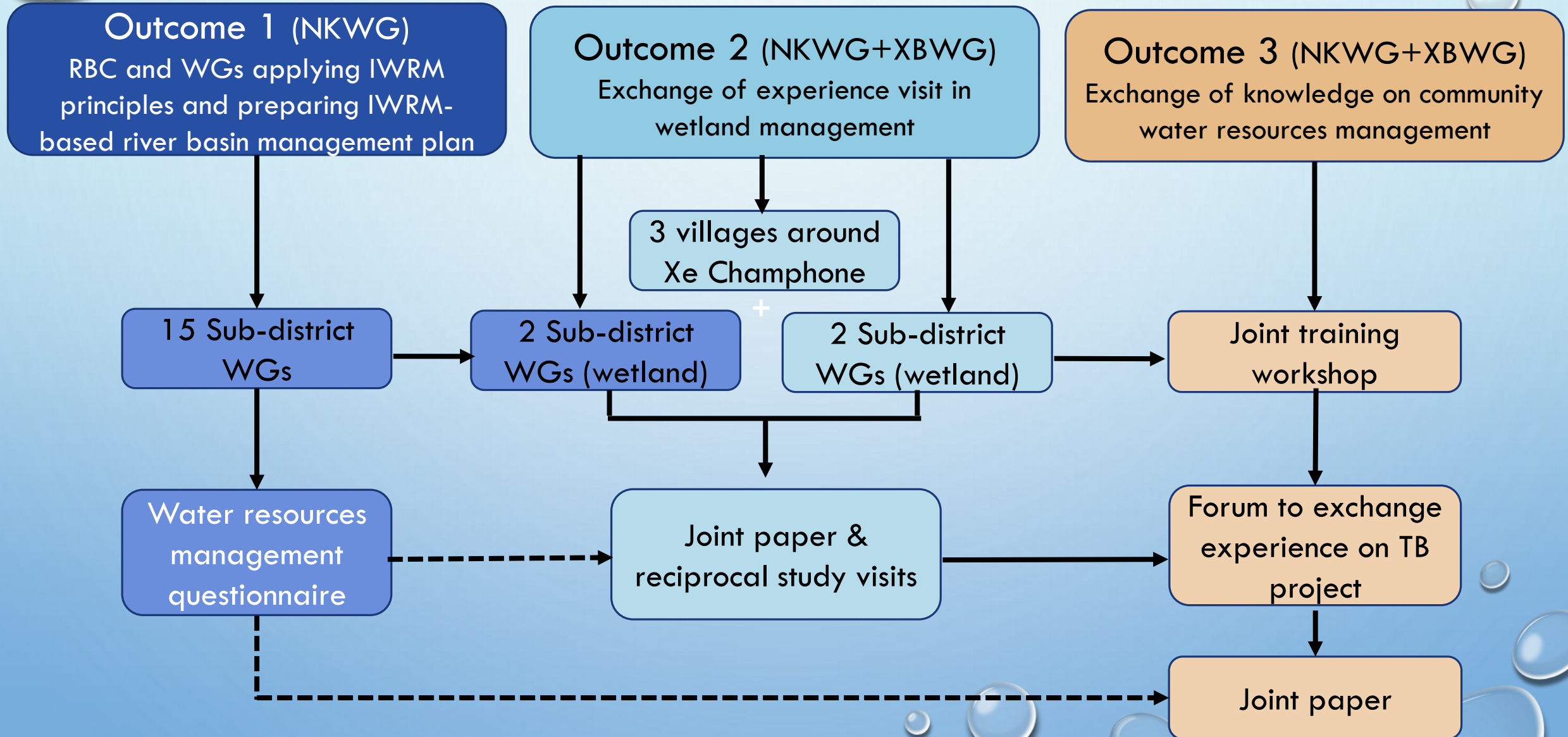
The project is a pilot project to strengthening the dialogue between two countries on IWRM issues, and should be the basis for future dialogue on other IWRM issues.

- *“SUPPORT PRO-POOR DEVELOPMENT, SUSTAINABLE LIVELIHOODS AND MAINTAIN MAINSTREAM OF THE MEKONG RIVER”.*

Scope for Transboundary Cooperation and Exchange Issues

1. Water, related resources and environmental management,
2. Economic exchange (e.g. agriculture, livestock, fishery, tourism),
3. Cultural exchange,
4. Joint natural resources utilization (e.g. water resources and fishery),
5. Data and information exchange and sharing (sensitive topics will be avoided), and
6. Physical impacts of climate change adaptation.

Linkage among Outcome 1, 2 and 3

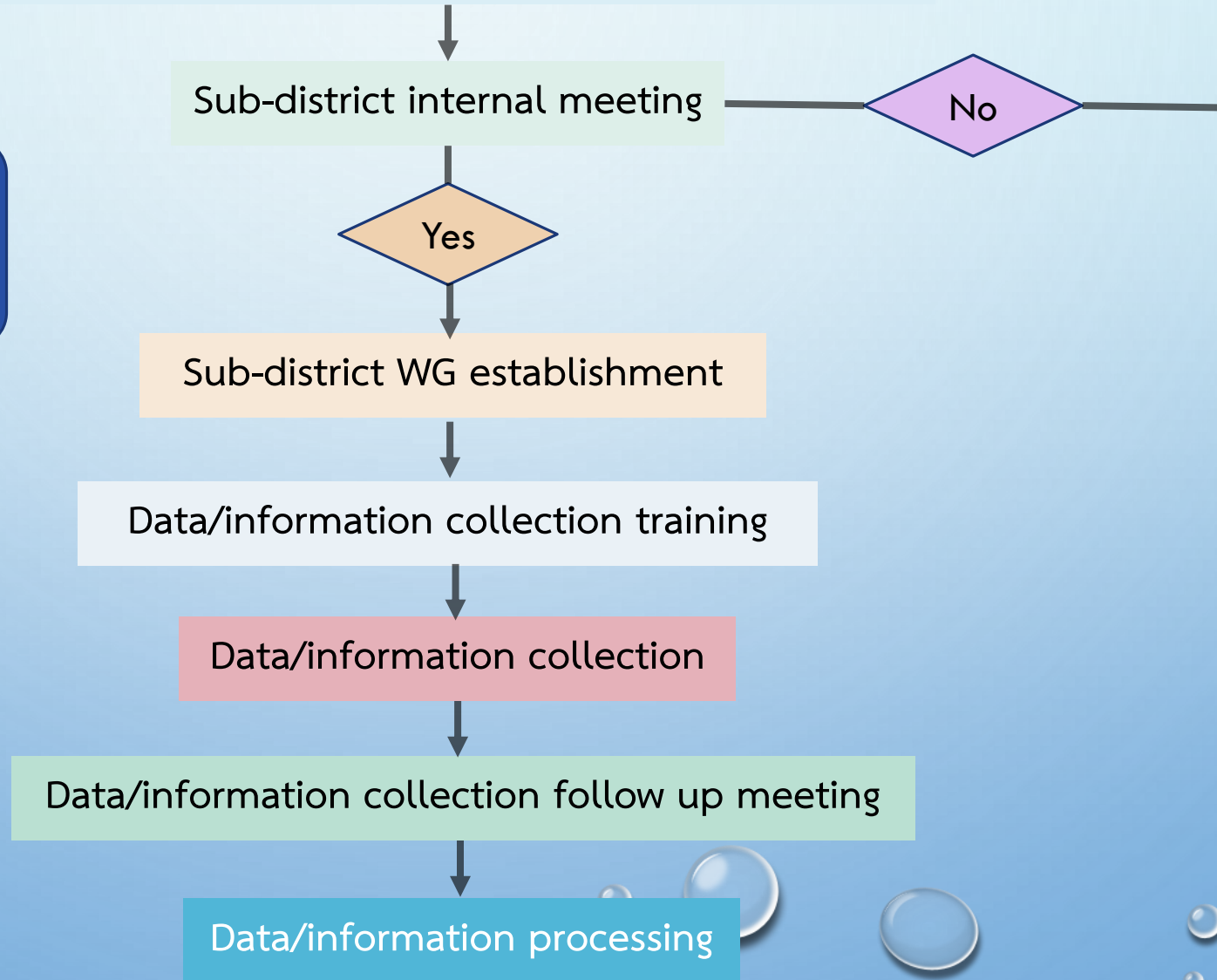


Acknowledge key stakeholders (NKWG meetings)

- Scope of project
- WG authority and duties
- Pilot areas in the project

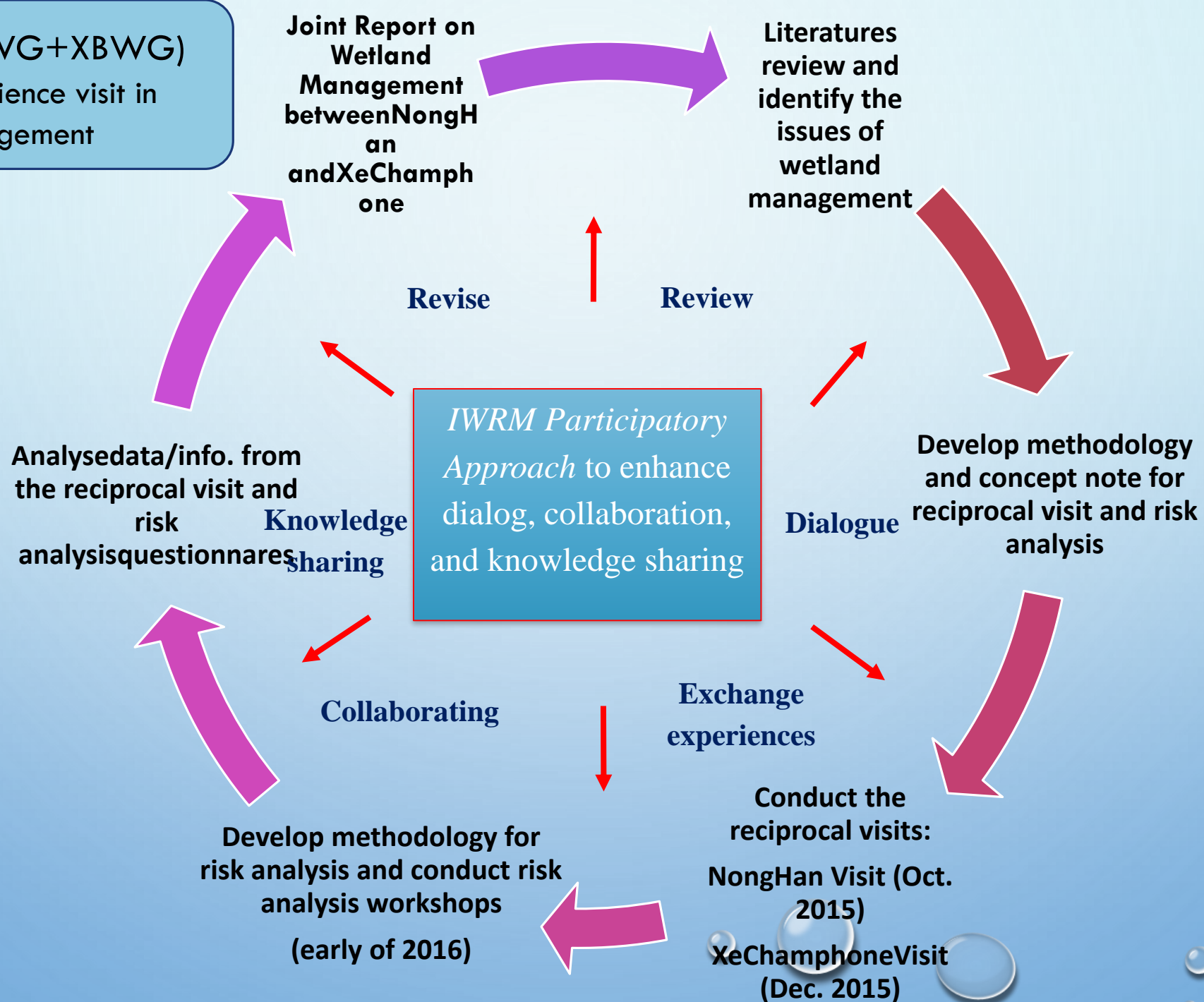
Outcome 1 (NKWG)

RBC and WGs applying IWRM principles and preparing IWRM-based river basin management plan



Outcome 2 (NKWG+XBWG)

Exchange of experience visit in wetland management



NK

Outcome 1

Data/information collection training

Joint Activities

Share questionnaire with XBAG

XB

Outcome 2

Revise questionnaire and training for data collection

Analyse data/information issues of pilot areas

Outcome 3 (NKWG+XBWG)
Exchange of knowledge on community water resources management

Clearing and boundary marker on Makree Basin
Analyse data/information of pilot areas for GIS data

Select MRM tools

GIS training workshop

Select MRM tools

Training & demonstration of MRM tools

Forum to exchange experience on TB project

Training & demonstration of MRM tools

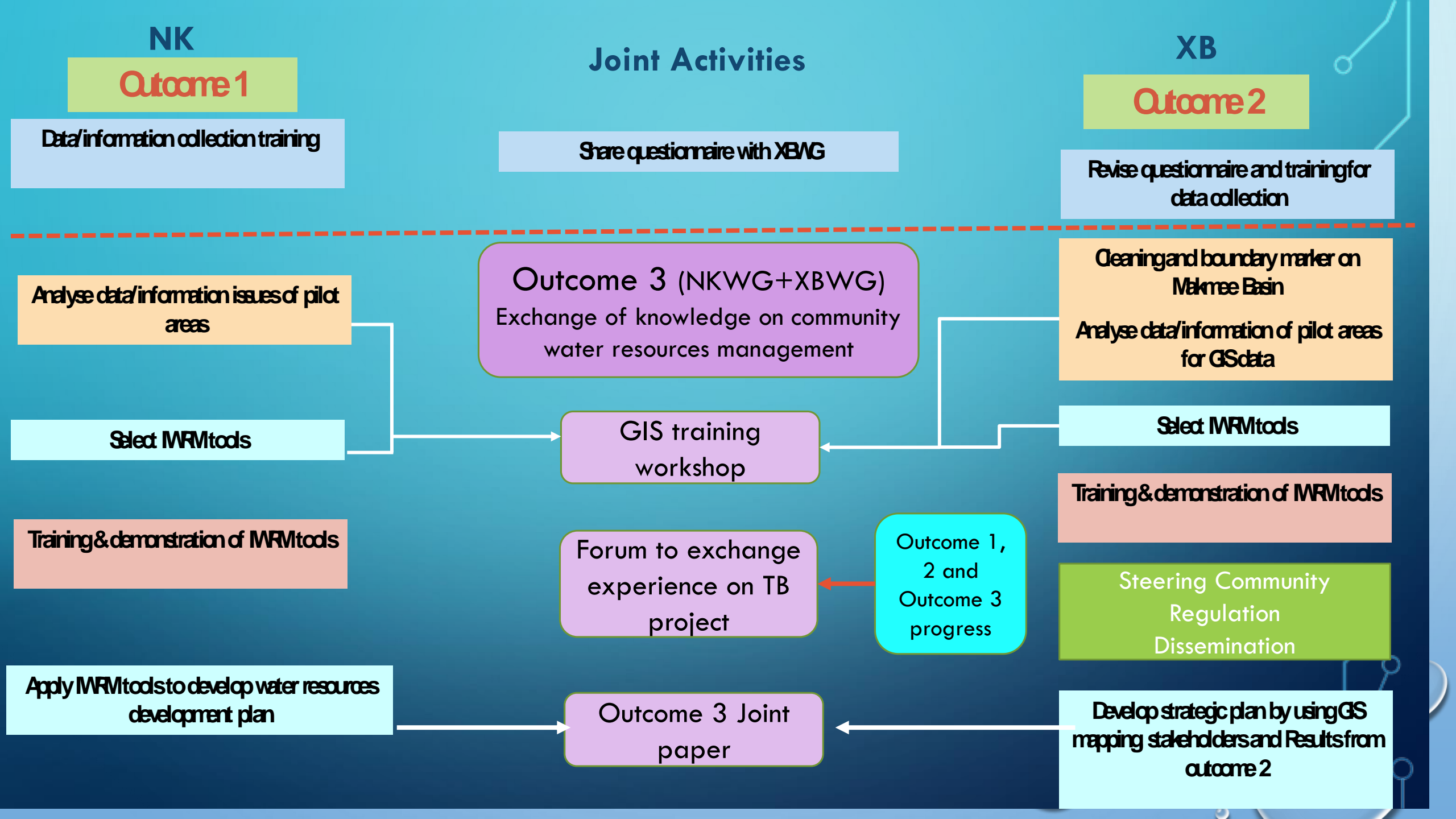
Outcome 1, 2 and Outcome 3 progress

Steering Community Regulation Dissemination

Apply MRM tools to develop water resources development plan

Outcome 3 Joint paper

Develop strategic plan by using GIS mapping stakeholders and Results from outcome 2



Transboundary Wetland Management between Nong Han-Thailand and Xe Champhone-Lao PDR

Community level: joint training/meeting of community leaders could be organised to strengthen the dialogues and exchange experience on, for example, wetland and environmental management, and climate change adaptation.

Local government level: local government bodies of both Thailand and Lao PDR may organise joint meeting to exchange their experience and other aspects such as policy, regulation, and issues on wetland management. A focal point or *liaison* officer could be appointed for each party.

National level: government-to-government and ministry-to-ministry collaboration. Joint understanding, agreement, plan, and policy that facilitate joint transboundary goal and interest could be developed.

Challenges and Lessons Learnt

1. It is vital to **wisely preserve and conserve the wetlands.**
2. **Awareness and involvement of the people on sustainable water use and sharing** should also be promoted.
3. **Participatory approach:** participation of all stakeholders is a key factor in promoting **wetland sustainable development.**
4. **Sustainable development** should carefully be planned holistically with the **participation** of relevant stakeholders.
5. **Equitable and sustainable water use** can be enforced *via* water regulations or agreements.

Challenges and Lessons Learnt

6. **Wetland management** should be conducted integrately to coordinate relevant agencies and stakeholders, a single body of a wetland management e.g. wetland management committee (WMC).
7. **Data and information base** should be developed, maintained, and shared within the wetlands and between other wetlands, and accessible by all stakeholders.
8. **Climate change adaptation and mitigation policies and programme** should be prepared and implemented. People should be informed, aware and trained to cope with the impacts of climate change.