



**12<sup>th</sup> REGIONAL  
STAKEHOLDER FORUM**

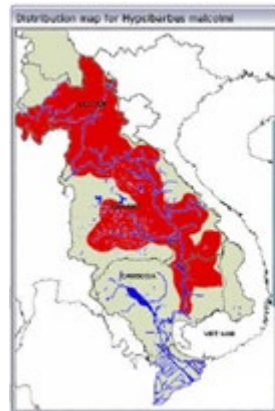
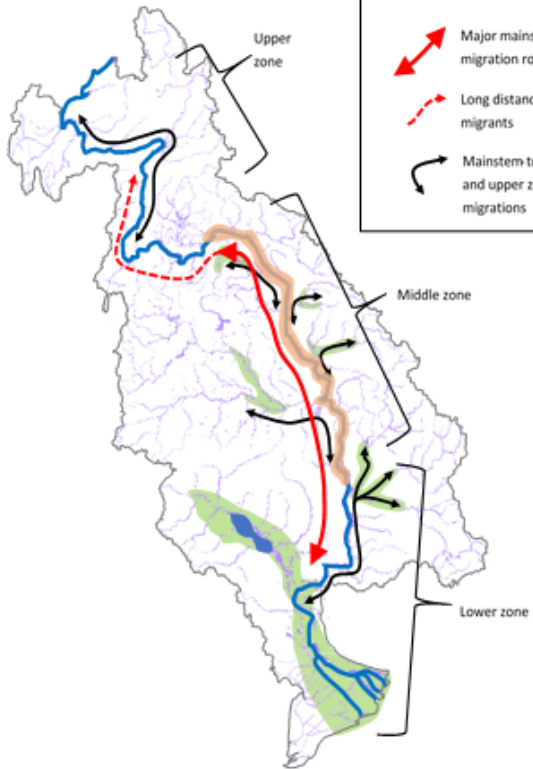
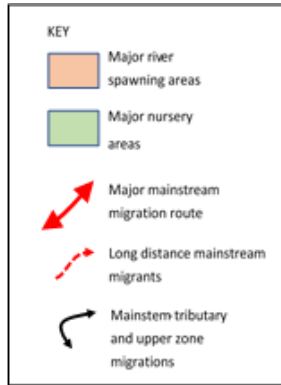
29 June 2022, Bangkok, Thailand

# Elevating Fisheries in Transboundary Management in the Lower Mekong Basin

Ian G. Cowx

# Value of fisheries in the LMB

Fish migration zones and patterns in LMB



- Capture fisheries fundamental to nutrition, food security, livelihoods and societal well-being
- Crucial to recognise importance of other aquatic animals
- Most of the catch consumed directly by households, and is unreported
- Fisheries dependent on free movement (all seasons) and distribution of fish, extent of flooding and sediment dynamics


# Transboundary pressures on fisheries in the LMB



- **Fisheries exploitation:**
  - Increasing demand, increasing population growth, illegal fishing
- **Agriculture/rice farming:**
  - Disconnection of floodplains, intensification of production, pesticides, fertilizers
- **Sediment extraction:**
  - Alteration of channel morphology and flooding regimes; reduction in nutrient loadings
- **Hydropower:**
  - Barriers to migration; inundation of key fish habitats, disruption of flow regimes
- **Climate Change:**
  - Increased flooding and drought; disruption of flooding cycles



# Problems with current management actions

- Options do not fully consider multi-dimensional impacts of water and land use developments in LMB- need upstream-downstream thinking
  - Fish passage is just one (untested) tool in a suite of measures to support fisheries
  - Improve mechanisms to communicate importance of fish conservation and fisheries to livelihoods, local economies and food security and influence decision-making—use ecosystem services approach
  - Further promote mechanisms to integrate fish and fisheries into the wider ecosystem planning process
- 

# In more practical terms, this means:

- Building bridges between water resource and societal development and fisheries by:
  - Understanding motives and drivers of other sectors
  - Improving the linkages between sectoral approaches
  - Minimising conflicts- consider alternative energy mixes
  - Optimising resource use through cross-sectoral management

To ensure continued deliver of services to all sectors of society



# In more practical terms, this means:

- Building bridges between water resource and societal development and fisheries by:
  - Understanding motives and drivers of other sectors
  - Improving the linkages between sectoral approaches
  - Minimising conflicts- consider alternative energy mixes
  - Optimising resource use through cross-sectoral management

To ensure continued deliver of services to all sectors of society





# 12<sup>th</sup> REGIONAL STAKEHOLDER FORUM

29 June 2022, Bangkok, Thailand

***THANK YOU***